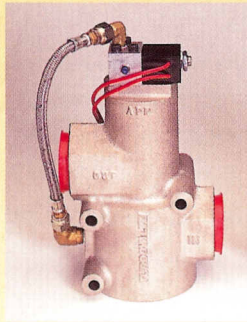
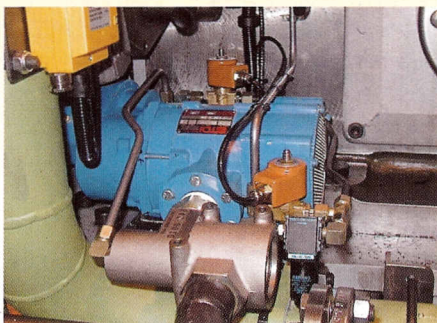


A Versatile Starting Air or Control Relay Valve

TurboValve is a versatile, pilot-operated starting air or control relay valve used for the installation of TurboTwin Air Starters. TurboValve is a direct replacement for Sealco Models (10900, 11900, 14900, 110250) and Ingersol Rand (SRV125 and SRV150) relay valves. Its high flow capacity reduces pressure drop through the valve providing for a broad range of applications. A convenient auxiliary port allows you to tap pressure for indication, control or pilot actuation. Operation of the TurboValve is simple. When either electricity is applied to the solenoid valve, or a control air is applied to the APP port, the main ports ("in" and "out") are opened to allow full flow through the valve. When the start button or control air is released, the return spring closes the main port.

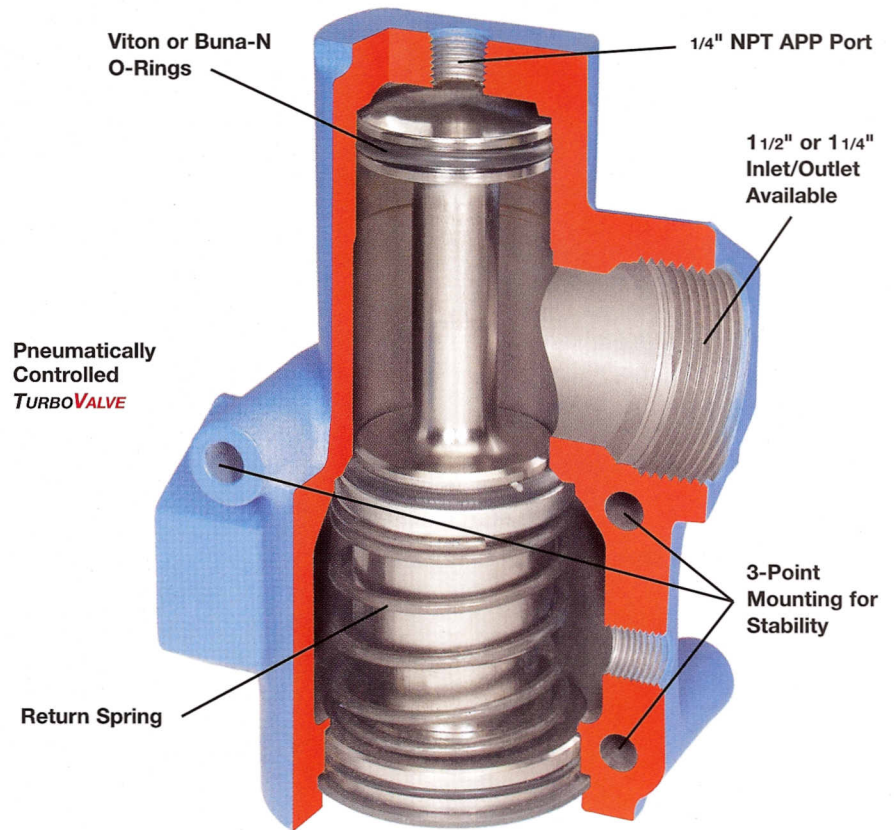


Electrically controlled
TURBOVALVE



T112-V **TURBOTWIN** with **TURBOVALVE**

TURBOVALVE



Features and Specifications

- Nickel-plated aluminum body
- Pressure Rating: 450 psig (31 Bar) rating for pneumatic versions
- 150 psig (10.3 Bar) for electro-pneumatic versions
- High flow capacity
CV factor: 40
- Replaceable O-rings (Viton or Buna-N)
- Compressed air only on electrically controlled version
- Simple, proven reliable relay valve design
- 1 1/4" or 1 1/2" NPT pipe sizes
- 3-point mounting for secure attachment to mounting bracket or frame
- -20° to 200° F (-29° to 93°C) operating temperature
- Lightweight ... only 2.9 lbs. (1.32 kg)
- Replaces Sealco (10900, 11900, 14900, 110250) and Ingersol Rand (SRV 125, SRV 150)
- Solenoid voltages (for electrically controlled versions): 12 VDC, 24 VDC, 110 VAC, 120 VAC

TDI
TECH DEVELOPMENT

www.tdi-turbotwin.com

6800 Poe Avenue, P.O. Box 13557
Dayton, Ohio 45413-0557

Tel: 937-898-9600 • Fax: 937-898-8431

Anything Less Than a **TURBOVALVE** is a Compromise

AN03-663 Rev 12/07